

CHY2

Modelo

Diâmetro

10	10 mm
16	16 mm
20	20 mm
25	25 mm

D

Dupla Ação

Exemplo: CHY2-10D
CHY2-25D

Características Técnicas	
Fluído	Ar
Funcionamento	Dupla Ação
Pressão de trabalho (Bar)	1 à 6
Temp. de trabalho (°C)	-10 à 60
Repetitividade (mm)	±0.2
Freq. máx. de trabalho (c.p.m)	60
Lubrificação	ISO VG32

Kit de Reparo		
Ø da Garra	Código	Compõe o kit
10	KR-CHY210	Vedações do êmbolo
16	KR-CHY216	
20	KR-CHY220	
25	KR-CHY225	

Modelo	Ø (mm)	Momento de retenção efetiva (Nm)*	Ângulo de abertura (2 lados)	
			Lado de abertura	Lado de fechamento
CHY2-10D	10	0.16	180	-3
CHY2-16D	16	0.54		
CHY2-20D	20	1.10		
CHY2-25D	25	2.28		

* Pressão de 5 Bar.

Sensores Aplicáveis

SM - **07**



Exemplo: SM-07R-2M
SM-07P-M8

_____ - _____

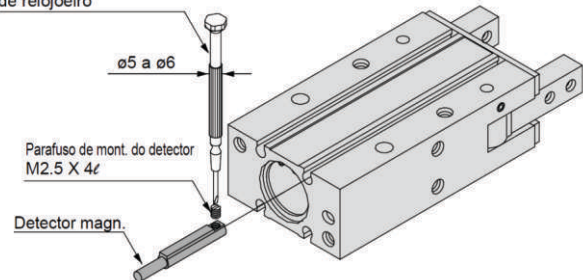
Tipo

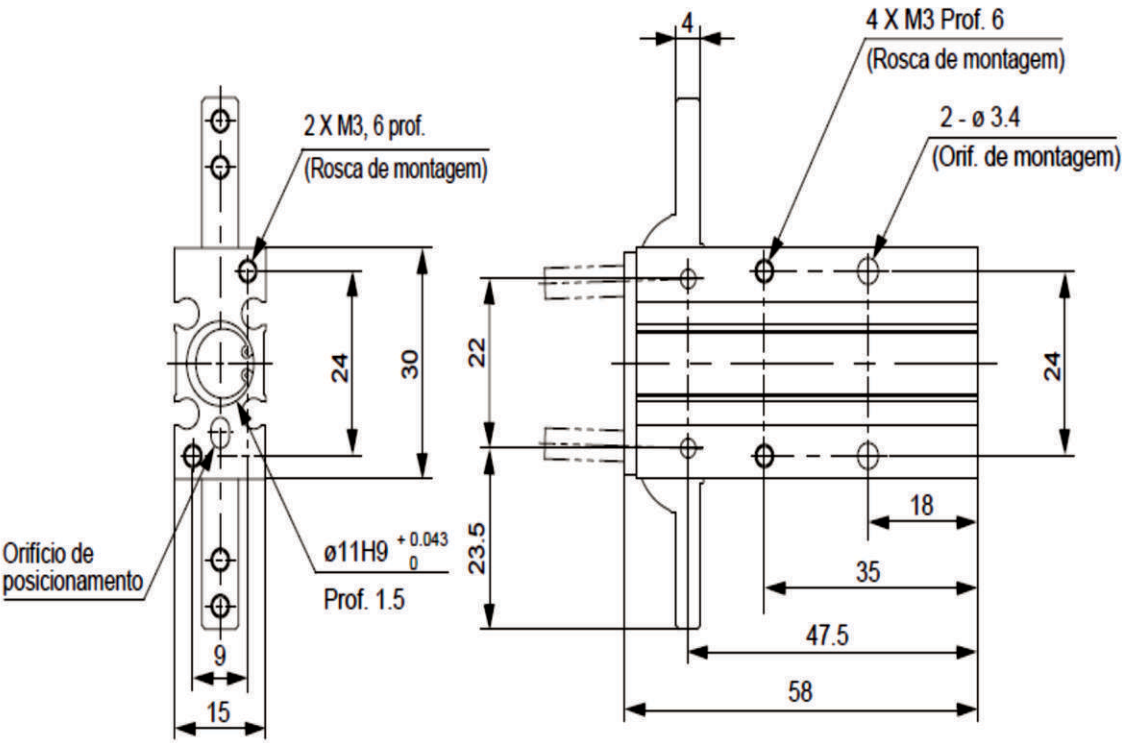
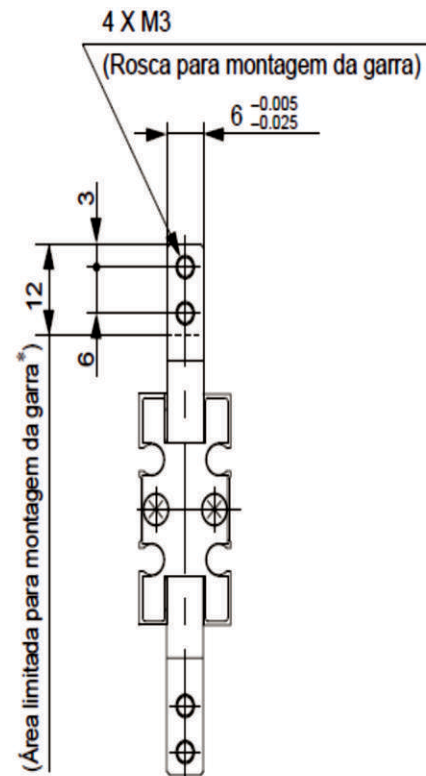
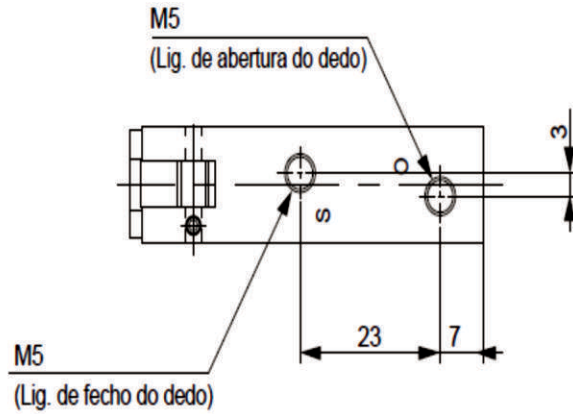
R - Reed (2 fios)
P - PNP (3 fios)
N - NPN (3 fios)

Cabo

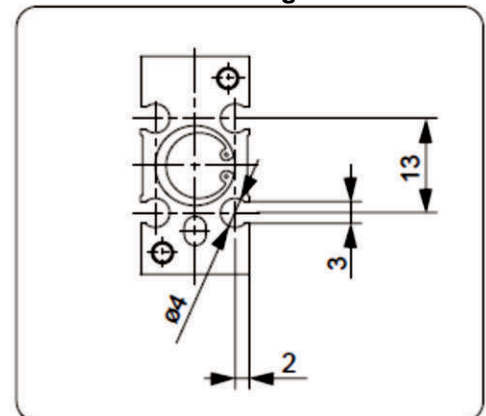
M8 - Conector M8
2M - 2 metros

Chave de fendas de relojoeiro

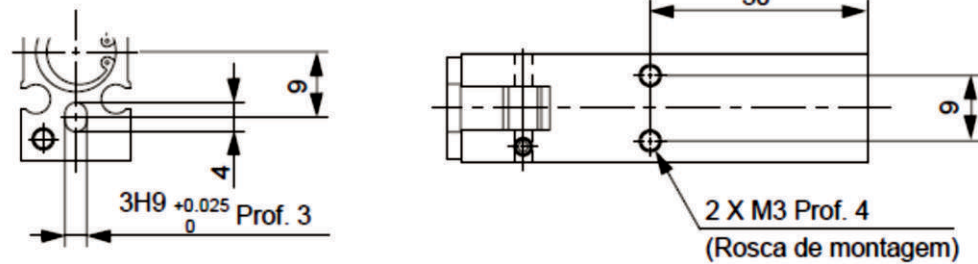


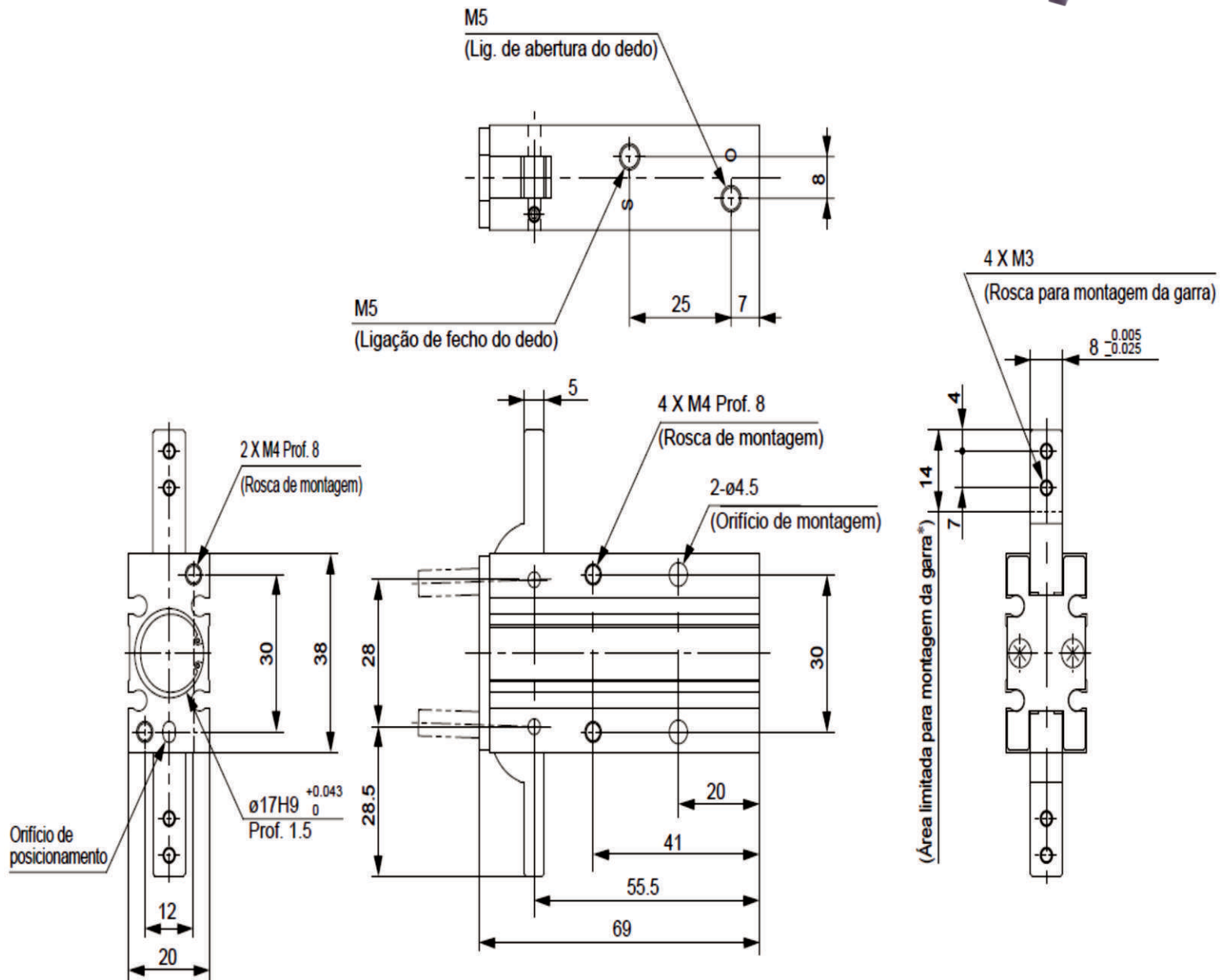


Dimensões da ranhura de montagem do sensor magnético

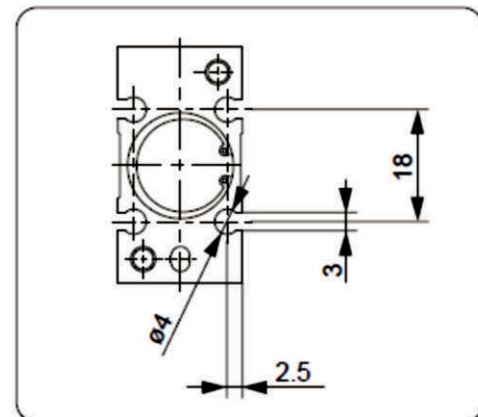


Posicionamento do orifício

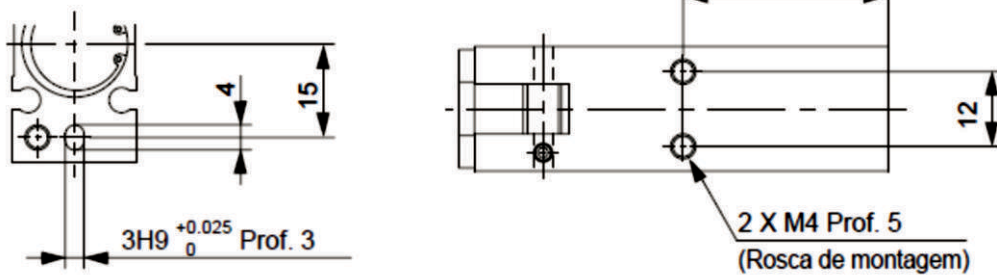


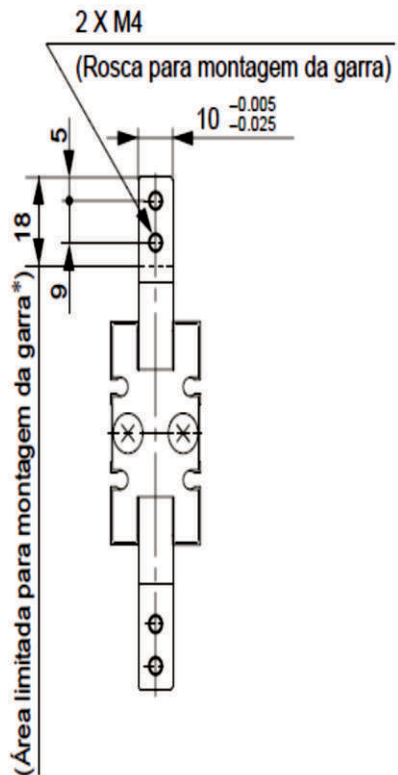
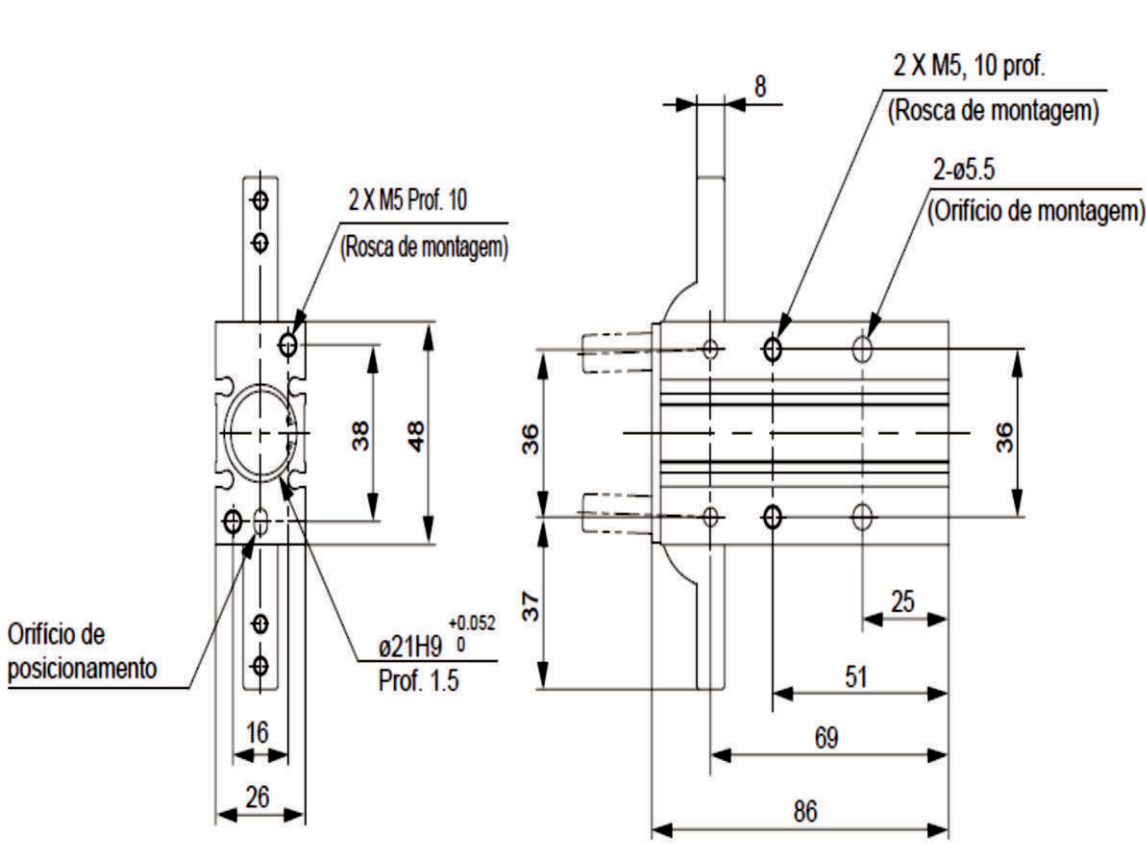
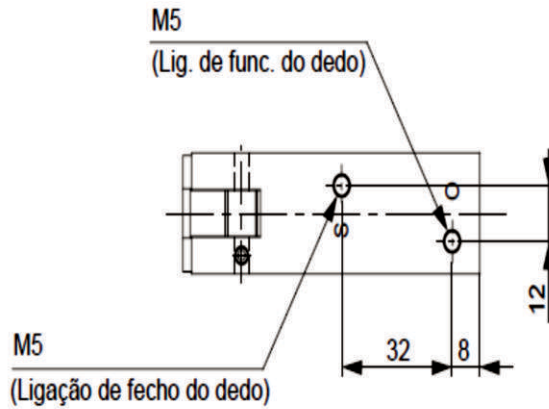


Dimensões da ranhura de montagem do sensor magnético

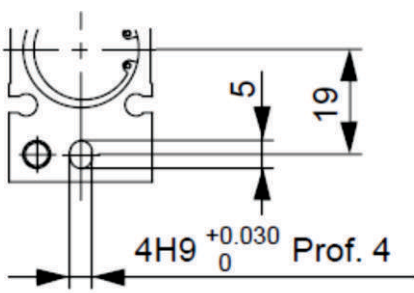


Posicionamento do orifício

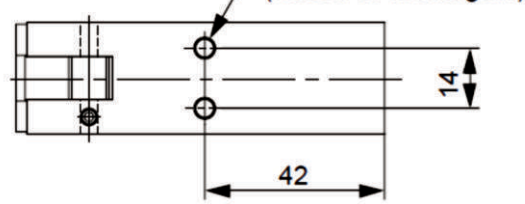




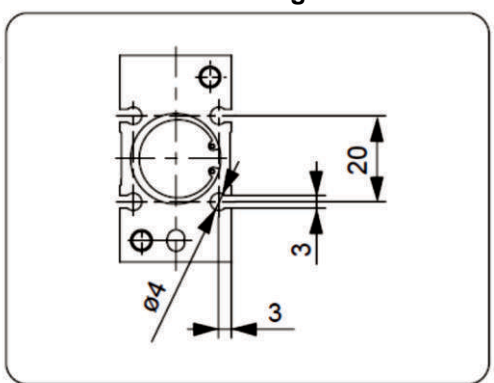
Posicionamento do orifício

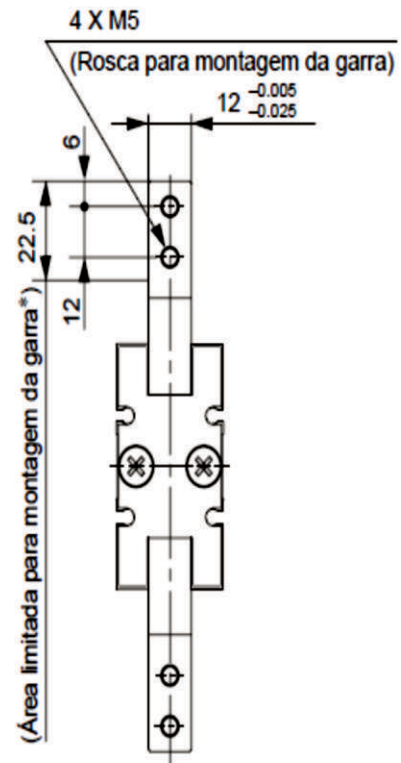
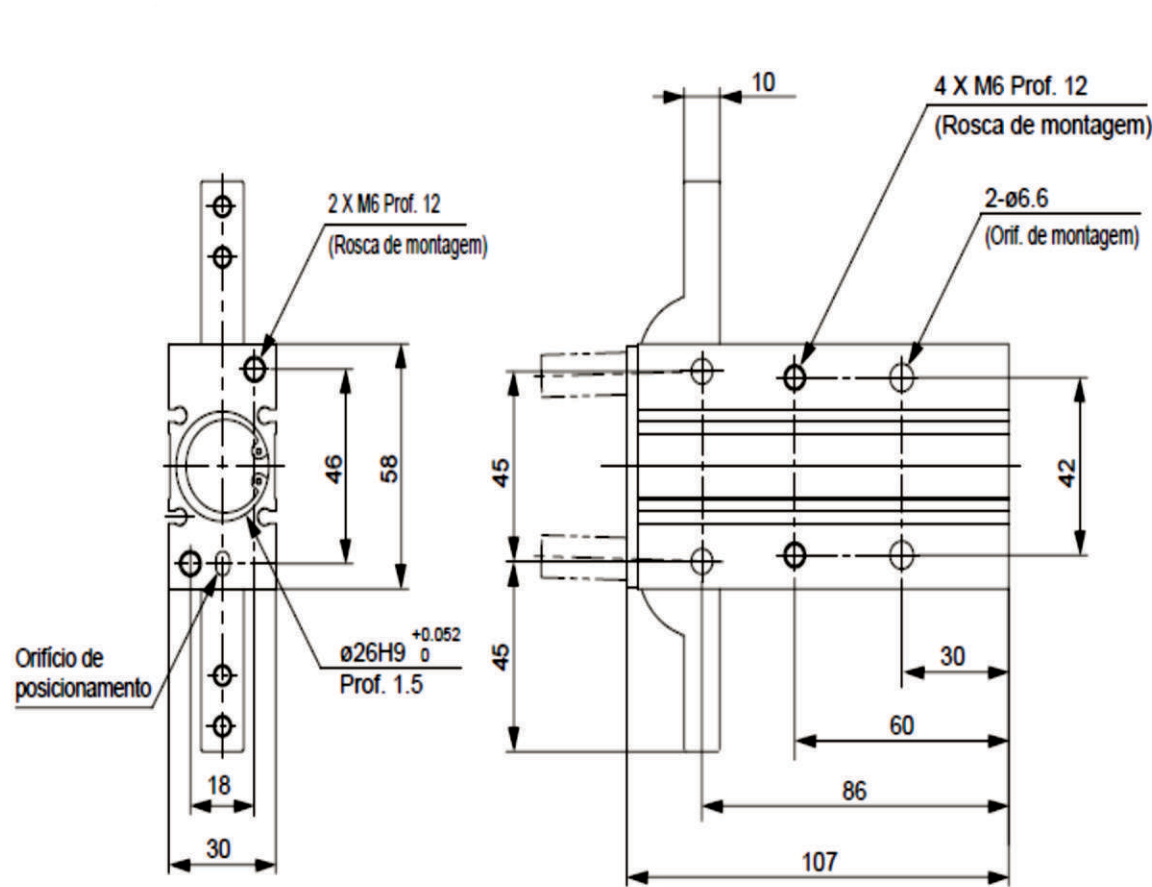
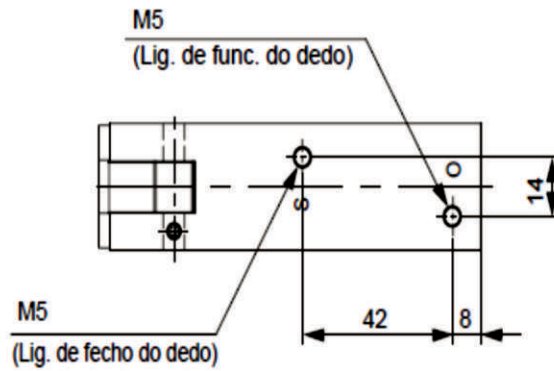


2 X M5 Prof. 8 (Rosca de montagem)

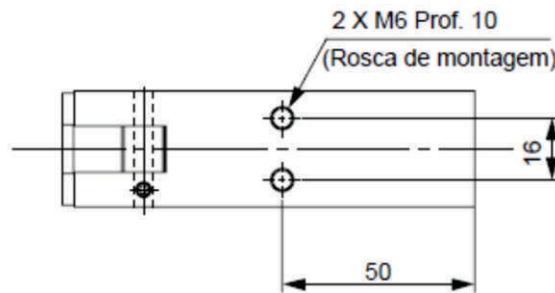
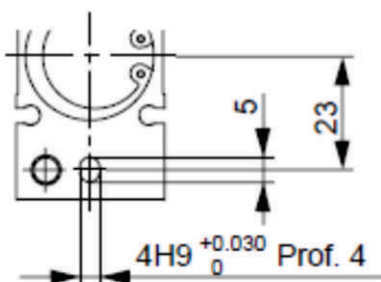


Dimensões da ranhura de montagem do sensor magnético





Posicionamento do orificio



Dimensões da ranhura de montagem do sensor magnético

